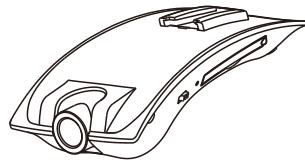




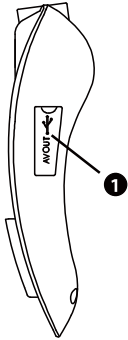
Mobile-i

Instruction Manual

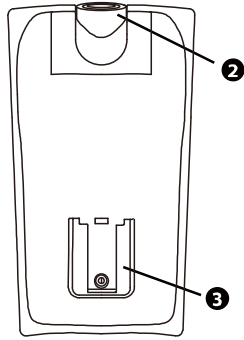


**Please read this manual before using the Mobil-i,
and keep for future reference, thank you.**

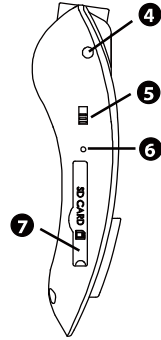
Product overview



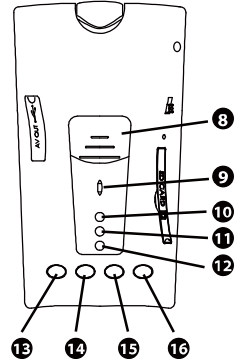
- 1** USB & AV-out
- 2** Camera
- 3** Holder Slot
- 4** Camera Lock



- 5** Mic. On-Off
- 6** Reset Key
- 7** SD card slot
- 8** Power & Video On-Off



- 9** Buzzer
- 10** LED- Blue
- 11** LED- Green
- 12** LED- Red



- 13** Down
- 14** Up
- 15** Enter
- 16** Mode

Contents

Mobile-i.....	1PC
Suction Cup Holder.....	1PC
Fixed Holder.....	1PC
Car Charger.....	1PC
USB Cable.....	1PC
TV Cable.....	1PC
CD-Rom.....	1PC



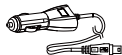
Mobile-i



Suction Cup Holder



Fixed Holder



Car Charger



USB Cable



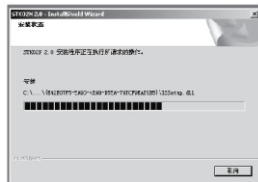
TV Cable



CD-Rom

Driver Installation and Backup CD Content

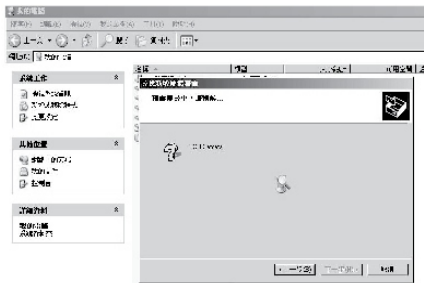
1. Turn on PC and insert CD-rom into CD-ROM driver. There are 'STK02N' folder & 'RTCW.exe' time setting applications. Please copy both to PC for later use.
2. Double click to execute 'STK02N 2.0.exe', Click "Finish" after automatic installation.



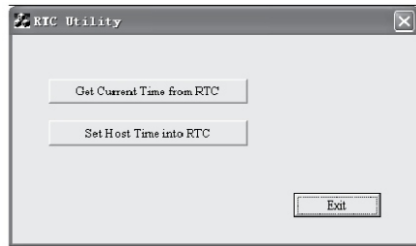
Please setup the Date & Time into Mobile-I before install to your vehicle:

Date & Time setting (PC)

1. Press & hold the 'Enter' key, then connect Mobile-i to PC by USB cable. PC will start to search the driver for Mobile-i. PC will prompt the equipment can be used after ready.



2. Execute 'RTC RW.exe', then double click 'Set Host Time Into RTC' to update the PC system time into RTC. After that, double click 'Get Current Time From RTC' to confirm the current time in RTC.



3. Time setting complete.
4. We recommend user updates the time every 6 month.

Date & Time setting (TV)

1. Connect Mobile-i to TV or AV monitor using applied TV cable.
2. Press 'Power & Video on-off' key for 3 seconds. Real time image will display on TV or AV monitor.
3. Press 'Mode' key twice, monitor will show up the Menu Interface.
4. Press 'Power & Video on-off' key to enter Setup Menu.



5. Use 'Up / Down' key to enter Data Input option.
6. Press 'Enter' and select 'Set' as below.
7. Use 'Up / Down' key and 'Power & Video on-off' key to adjust the date and time format. Press 'Enter' key to quit.
8. Time setting complete.



Mobile-i installation

1. Open the SD card cover and insert a SD card into the slot. (support SD card up to 32GB).



P.S.: The SD card must be inserted in the indicated direction. Otherwise may cause damage or recording error.

2. You can select Suction Cup Holder or Fixed Holder according to your own chooses. Then fix the Camera on the Holder as below.



a. Suction Cup Holder

Please clean up the windshield (inside), Put the holder in front of rear mirror then press the lever down to ensure the holder was fixed well.

b.Fixed Holder

Please clean up the windshield, Peel backing paper off and then stick it onto windshield by adhesive . Push firmly to secure holder.

3. Connect car charger to Mobile-I USB slot for power supply.

4. Lens adjust

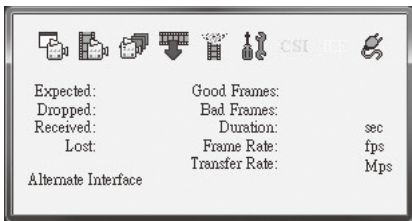
You have two way to adjust the lens angle:

Connect Mobile-i to your own video device:

- a. Using applied TV cable to Connect Mobile-i to your own video device.
- b. Start the engine then Mobile-i will start recording immediately, real time image will display on the screen.
- c. Use Philips screw driver to loosen the Camera Lock, adjust the lens angle according to screen then lock it.

Connect Mobile-i to your laptop:

- a. Press & hold "Enter", connect Mobile-i to laptop using the supplied USB cable.
- b. "Image Download Utility" start automatically. You can close the window at once or wait 15sec, utility will close automatically.
- c. Execute "STK02NC.EXE"
- d. Utility windows appear, then click the first icon (from left to right) to turn on PC-cam mode.

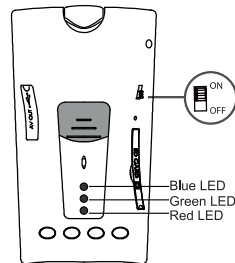


- e. PC-Cam started. Use Philips screw driver to loosen the Camera Lock, adjust the lens angle according to screen then lock it.

***If you have not any video device, please test recording and play back on TV.**

Recording

1. Start engine to power on Mobile-i, Green LED on and beep sound alert.
2. Red LED flash when Mobile-i start recording automatically.
3. Set the 'Mic on/off switch' to 'off' if no need sound recording.
4. Mobile-i will startup after starting engine if the lithium battery is live but won't record automatically if stop engine at once. It will record if detect the power supply from car charger after restarting engine.
5. Mobile-i need 1~2 sec. for data loading, If you stop the engine before the recording start, recording function may not start or stop automatically. Please check the LED light status and press Power & Video on-off switch to resume/stop recording manually.
6. Do not pull out SD card during recording; it may damage SD card or recording data.



8. Every movie clip is three minutes and saved as AVI format. Date & time is shown on the video accordingly.
9. After SD card memory is full, Mobile-i will erase the first 15mins data to free up the memory for continue recording.
10. You will get a Beep sound alert if the car charger loosened by vibration during driving. Mobile-i will stop recording after 10 sec.
11. "Mode, Enter, Up & Down" button for TV mode or PC connection only.
12. Stop engine, Mobile-i keep on recording for 10 seconds and then shutdown.

PS. Certain car models may keep the Mobile-i power on even you stop the engine. If the red LED keep on, its means car charger keeps working, please pull out the charger to avoid previous video have been overwrite.

PC Mode Operations

USB mode

1. Press & hold the 'Mode' key, then connect Mobile-i to PC by USB cable. "Image Download Utility" will start automatically.



2. If "Image Download Utility" didn't start, browse you SD card by "My computer" or "Files Manager".
3. Double-click "removable disk", you will find all the video were saved in 'DCIM' folder.
4. Play back the AVI file by any media player software.

Camera Mode

Press & hold the 'Enter' key, then connect Mobile-i to PC by USB cable. you can execute STK02N 2.0.EXE anytime for running Mobile-I as a PC camera.

TV Mode Operations

1. Connect Mobile-i to TV or AV monitor using supplied TV cable.
2. The 'Mode' key can switch to three menu. Press it to stop recording to enter into playback mode first, and then press once to enter into menu mode and press once again to enter into the record standby mode.
3. There are 9 thumbnails in the playback mode. Use 'up / down' key to select video. Press 'Enter' key to confirm the selection. Press 'Up' key once to play and press once again to pause.
4. Under TV mode, use the 'Mode / Enter / Up / Down' four keys to play video or reset other functions as below:
 - a) Select 'Delete' to delete one, all or selected videos.
 - b) Select 'Slide Show' to set the replay time.
 - c) Select 'Thumbnail' to browse video.
 - d) Select 'Volume' to set the video volume.
 - e) Select 'Format' to format memory.
 - f) Select 'Beep' to turn on or turn off the buzzer.
 - g) Select 'Language' to choose language.
 - h) Select 'Auto Off' to set the auto power off time.
 - i) Select 'Sys, Reset' to recover the default system.
 - j) Select 'Light Freq' to set the light frequency.
 - k) Select 'TV output' to set the output format for video.
 - l) Select 'Date Input' to set the date and time.
 - m) Select 'USB' to use Mobile-i as a removable disk or a camera.

Low Power Indication

If Mobile-i work with its own battery and the power running low, the blue LED will flash for 5 seconds and then shut down. If it is recording, all the data will be saved and then shut down.

LED Status

Working status	Red	Green	Blue
Power off	Off	Off	Off
Power on	Off	On	Off
Recording	Flash	On	Off
SD card detect fault	On	On	Off
SD card bad contact	Off	Flash	Off
Li-ion battery low	Off	Off	Flash
USB mode	Off	On	On
USB mode (no SD card)	On	On	On
Battery charging full	Off	Off	Off

Specifications

<i>Image Sensor</i>	300K Pixel CMOS Sensor
<i>Video Resolution</i>	VIDEO:640x480(VGA)
<i>File Format</i>	AVI
<i>AV OUT</i>	YES
<i>Cycle Recording</i>	YES
<i>Lens View Angle</i>	80 Degree
<i>Frame</i>	30FPS
<i>PC Interface</i>	USB 1.1
<i>Power</i>	5V Power ; Bulit-in LI-Ion Battery
<i>Operation system</i>	Windows 98 / 2000 / XP / Vista / 7
<i>Menu OSD</i>	Multil-languages
<i>Stand</i>	2 different adjustable holders
<i>Dimension</i>	105 x 60 x 26mm
<i>Weight</i>	68g
<i>Support SD Card</i>	1GB to 32GB
<i>Working temperature</i>	-10 C~70 C
<i>Storaging temperature</i>	-30 C~85 C

Attentions

1. In order to protect users' safety and benefits, please follow the user manual to operate.
2. The SD card must be inserted in the indicated direction. Otherwise may cause damage or recording error.
3. Please stop using the product if any deformation, having an unknown smell or some other abnormal Phenomena.
4. Please use neutral solvent to clean the blot, do not use organic solvent.

Warning

- * Do not modify any accessories, or our company won't responsible for any malfunctions and calamities may cause.
- * Do not put the product into fire, or our company won't responsible for any malfunctions and calamities may cause.
- * Please stop using the product if find distortion in shape, having an offensive odor and some other abnormal phenomena caused by the high temperature in car.
- * Power supply accessories must be operated in the right way as user manual, or our company won't responsible for any malfunctions and calamities may cause.
- * Do not pull out SD card during recording, or the SD card life time and the recorded information will be influenced.

Our company reserves the right to the interpretation of the product and correlative contents.